

**Floating ball**  
The red ball inside the flowmeter floats up and down dependant on flow pressure, indicating the rate of flow. Set the flow rate at the center of the ball.

**Adapter**  
Use with a hospital oxygen outlet only

**Cannula connection**  
The cannula can be smoothly disconnected. There is no risk of oxygen leakage since the cannula fits snugly with the tubing.



〈P-321 type〉

**Flowmeter**

**Flow dial**

**Relief valve**  
Alerts with a high warning sound where there is high pressure inside the humidifier bottle. Check that the patient hose is not blocked or kinked.

**Bottle cap**  
To prevent oxygen from leaking.



\* Use refined water when filling the bottle.

〈P-326 type〉



〈P-323 type〉



〈P-324 type〉 Nebulizer set



# Flow Rate is clearly indicated.

You can see the oxygen flow rate clearly from the position of the floating red ball. Adjust the height of the floating ball to the prescribed rate of flow. Simple, visual and safe oxygen flowmeter, **safetyflow**

## Features:

- Simple structure. There are only a few parts, so maintenance is easy.
- Clearly visible float tube. You can set the flow rate very easily.
- Safety structure equipped with an alarm. The alarm will sound if the bottle's inner pressure rises indicating kinks or other problems with the tubing..
- Very easy to refill using disposable refined water.



Oxygen Flowmeter: Safetyflow

**safetyflow**

## Specifications:

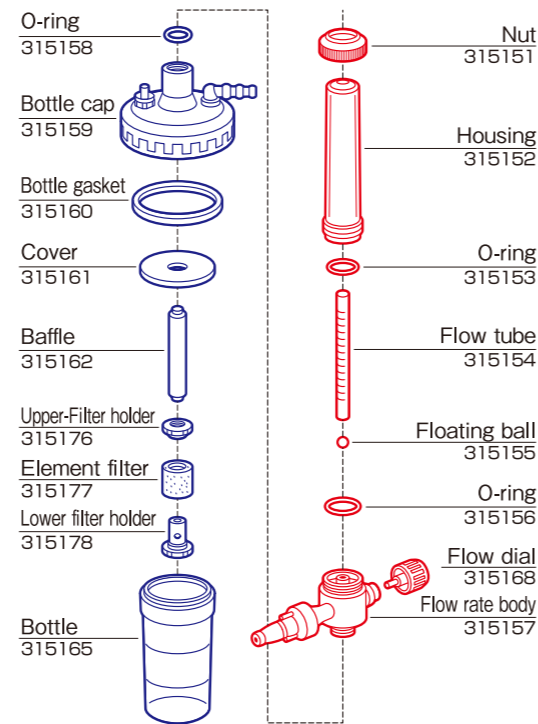
Type	Application	Flow rate range (l/min)	Regulator	Pressure gauge	Humidification method
P - 321	For piping	1 - 15	None	None	Bubble
P - 324	"	1 - 15	"	"	Nebulizer
P - 325	"	1 - 15	"	"	Bubble

Type	Application	Flow rate range (l/min)	Regulator	Pressure gauge	Humidification method
P - 323	For steel cylinder	1 - 15	Available	24.5Mpa (250kgf/cm <sup>2</sup> )	Bubble

Type	Application	Flow rate range (l/min)	Regulator	Pressure gauge	Humidification method
P - 326	For steel cylinder	1 - 15	Available	24.5Mpa (250kgf/cm <sup>2</sup> )	Bubble

## Parts List

(When ordering, clearly state the name and code for each part required.)



### ⚠ Caution!!

Read the Instruction Manual before using Safetyflow to ensure correct and safe use.

- The color of the product in this catalog may be different from the actual color.
- Product specifications and design may be changed to improve product performance, etc.

Manufacturer



Koike Medical Co.,Ltd.  
 1-24-8 Matsushima, Edogawa-ku, Tokyo 132-0031  
<http://www.koike-medical.co.jp/>

Exclusive Philippine Distributor:

**WellnessPRO**  
 tomorrow's medical devices

Unit 808 Richmond Plaza, San Miguel Ave cor Lourdes St.,  
 Ortigas Ctr. Pasig City 1605 Philippines  
 Mobile no.: +63 922 896 0964  
 Tel. no.: +63 2 636 3580, +63 2 637 0930, +63 2 637 0473  
 Fax: +63 2 636 7542  
 Email: [wellnessproinc@gmail.com](mailto:wellnessproinc@gmail.com), [jcjuan@wellnessproinc.com](mailto:jcjuan@wellnessproinc.com)  
[www.wellnessproinc.com](http://www.wellnessproinc.com)

Oxygen Flowmeter

# safetyflow

