



- Advanced imaging technology and unparalleled ergonomic design. Visionary performance in the palm of your hand.
- Unique flexibility from the choice of two blade types - standard and channeled - depending on the user technique and complexity of the airway. Choose what is right for you.
- King Vision® is designed to visualise the vocal cords indirectly which can help minimize the need for tissue manipulation and improve the ability to see anterior airways.

Exclusively Distributed by:

**WellnessPRO**  
tomorrow's medical devices



Sitting Position



Prone Position



Side Lying Position



Immobilize Neck Position



Supine Position

King Vision® has been designed with the intention to make a revolutionary series of high performance portable video laryngoscopes. The King Vision® combines the convenience of a durable reusable, video system with a disposable blade at a price that's affordable for all of your intubations, difficult and routine.

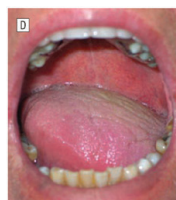
## BETTER PATIENT CARE

The King Vision® is ergonomically designed to provide minimal lifting of soft tissue and impact on teeth.

### HOW TO CLEAN AND MAINTAIN KingVision™ Display:

- Use 70% isopropyl alcohol for disinfection
- Do not sterilize
- Do not submerge the display
- Use moistened wipes/gauze/swabs not dripping wet

Suitable up to Mallampati IV Difficulty



KVISO1  
Multi-Use  
Display



KVLVA34  
Multi-Use  
Adaptor-Adult

Available Also:  
KVLAB2C

Multi-Use  
Adaptor-Pedia

2 SIZES:  
Adult  
Pedia

REMOVABLE  
CAMERA LENS and  
LIGHT SOURCE



## PRODUCT SPECIFICATIONS

### REUSABLE DISPLAY

<b>Batteries</b>	3AAA (Alkaline recommended)	<b>Video Screen</b>	TFT LED Display
<b>Battery Life</b>	About 80min. (Battery status indicator flashes red when batteries needs to be changed.)	<b>Video Screen Size</b>	6.1cm / 2.4" diagonal
<b>Computerized Power Management System</b>	Automatic gain and exposure control	<b>Material</b>	Polycarbonate/ABS anti-reflective coating on display window
<b>Video Aspect Ratio</b>	4:3	<b>Camera Chip</b>	CMOS
<b>Video Port</b>	RCA connection to monitor with cable	<b>Camera Resolution</b>	640 x 480 VGA
<b>Video Refresh Rate</b>	30 frames per second	<b>Light Source</b>	White LED
<b>Video Resolution</b>	320 x 240 (QVGA)	Product specifications and technical details may change.	

### DISPOSABLE BLADES

<b>Anti-fog</b>	Coating on distal lens
<b>AP Height of Blade</b>	13mm (non-channeled) 18mm (channeled)
<b>Blade Length</b>	17cm
<b>Blade Width</b>	26mm (standard) 29mm (channeled) 16mm at distal tip
<b>Disposable Material</b>	Polycarbonate/TPE
<b>ET Size</b>	6.0mm - 8.00mm (channeled blade)

## KINGVISION CONFIGURATIONS & RANGE

Seq	WPI Item #	Photo	Unit	Item Name	Item Description
1	KVLKIT2		Set	KingVision Basic Kit	OLED Video Laryngoscope set of 1 viewer and 2 classic blades. With 3 AAA batteries. Light source of white LED.
2	KVISO1		Single	KingVision Viewer	Detachable viewer with OLED 2.4" Diagonal Screen with USB video output connectivity
3	KVL03C		Single	KingVision Classic Channeled Blade (Adult)	Size 3 Adult Disposable Laryngoscope Channeled Blade for easier intubation with built-in light source and camera
4	KVL03		Single	KingVision Classic Standard Blade (Adult)	Size 3 Adult Disposable Laryngoscope Blade with built-in camera and LED light source. Non-channeled blade.
5	KVLAB2C		Single	KingVision aBlade Channeled (Pedia)	Disposable Laryngoscope Channeled Blade for Pedia.
6	KVLAB1		Single	KingVision aBlade Standard (Pedia)	Disposable Laryngoscope Non-channeled Blade for Pedia.
7	KVLVA34		Single	KingVision Adaptor for Adult	Adaptor for Adult with Built-in LED Light and CMOS Camera at the tip of the adaptor.
8	KVLVA12		Single	KingVision Adaptor for Pedia	Reusable video adapter with camera and white LED light for Pedia.
9	KVCABL		Single	KingVision Video Output Cable	Custom USB Video Output Cable (2.75m/9") for external screen. Made in USA. 1 year carry in warranty.
10	KVISOADCASE		Single	KingVision Long Case	Plastic Hard Case. Made in USA.

ANESTHETICIST PERSONAL KIT PACKAGE	Kingvision Display	Ablade Adapter Adult	Ablade Adapter Pedia	Channeled Classic Blade Adult	Standard Classic Blade Adult	Video Out Cable	Long Case	Channeled Blade Size 2C Pedia	Standard Blade Size 1 Pedia	Standard Blade Size 3 Adult	Channeled Blade Size 3 Adult
<b>A</b> KV-KVISO1VA34-F-2G	✓	✓		✓	✓		✓				
<b>B</b> KV-KVISO1DC-F-2G-H	✓			✓	✓	✓					
<b>C</b> KV-KVISO1VA1234-A-C-D-E-2F-3G-H	✓	✓	✓	✓	✓	✓	✓	✓	✓	✓	✓

INSTITUTIONAL EMERGENCY KIT PACKAGE	Kingvision Display	Ablade Adapter Adult	Ablade Adapter Pedia	Video Out Cable	Long Case	Channeled Blade Size 3 Adult	Standard Blade Size 3 Adult	Standard Blade Size 1 Pedia	Channeled Blade Size 2 Pedia	Standard Blade Size 2 Pedia
<b>A</b> KV-KVISO1VA1234-10D-20E-H	✓	✓		✓	✓	✓	✓			
<b>B</b> KV-KVISO1VA1234-5A-2B-3C-5D-5E-H	✓	✓	✓	✓	✓	✓	✓			
<b>C</b> KV-KVISO1VA1234-H	✓	✓	✓	✓	✓			✓	✓	✓



Disposable  
standard  
aBlade  
KVLAB3



Disposable  
channeled  
aBlade  
KVLAB3C

Exclusively Distributed by:

**WellnessPRO**  
tomorrow's medical devices